



# GAT MONTHLY MEMBERSHIP PROGRESS REPORT

Results as of: 2/28/2023

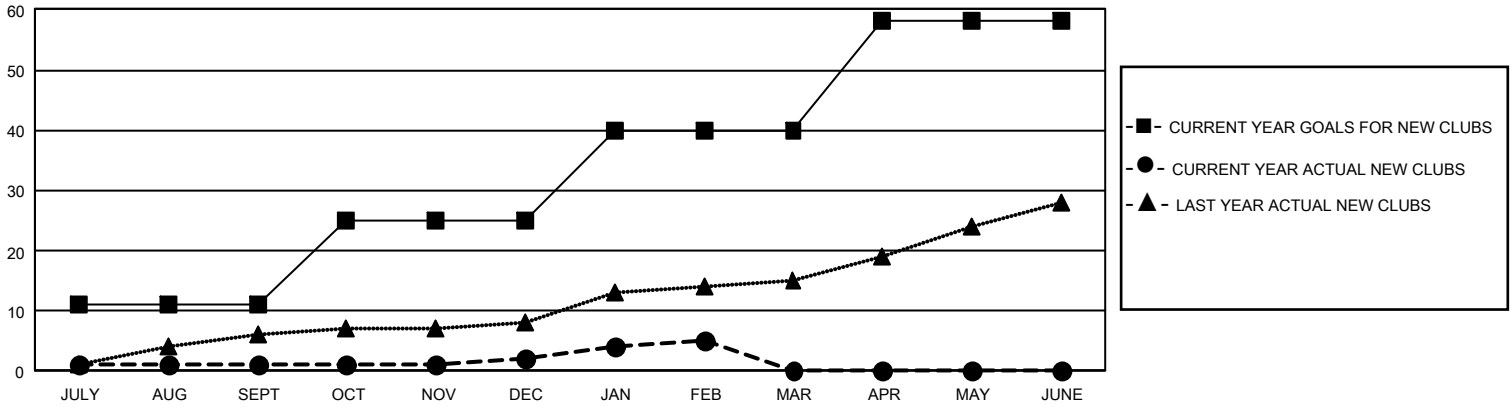
## GMT Constitutional Area 4, Group F

REPORT DOES NOT INCLUDE CLUBS IN UNDISTRICTED AREAS.

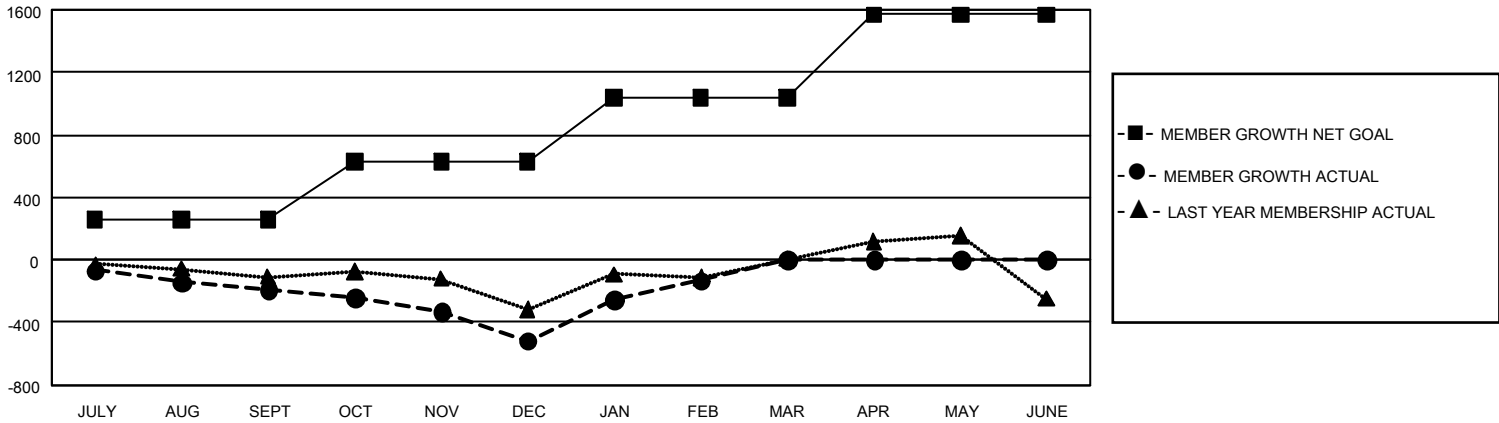
Clubs			
RESULTS FOR 2022-2023			
QUARTER	NEW CLUB GOAL	NEW CLUBS	DROPPED CLUBS
JULY/AUG/SEPT	33	1	6
OCT/NOV/DEC	42	1	4
JAN/FEB/MAR	45	3	1
APR/MAY/JUNE	54	0	0

Members			
RESULTS FOR 2022-2023			
QUARTER	MEMBER GROWTH NET GOAL	MEMBER GROWTH ACTUAL	DROPPED MEMBERS ACTUAL (including transfers)
JULY/AUG/SEPT	257	623	721
OCT/NOV/DEC	374	1,005	1,215
JAN/FEB/MAR	409	873	439
APR/MAY/JUNE	531	0	0

GOALS AND ACTUAL NEW CLUBS CUMULATIVE



GOALS AND ACTUAL MEMBERS CUMULATIVE



DROPPED CLUBS: 11	792 CLUBS OF 1,566 ADDED 1 OR MORE NEW MEMBERS	<u>GENDER DISTRIBUTION</u>	
		MALE	29,537 (68.40%)
<u>DROPPED MEMBERS</u>		FEMALE	13,641 (31.59%)
DECEASED	311	NON BINARY	0 (0.00%)
CLUB CANCELLED	84	PREFER NOT TO ANSWER	6 (0.01%)
OTHER	1,980	TOTAL FAMILY UNIT MEMBERS	3,571
<b>TOTAL</b>	<b>2,375</b>	FAMILY MEMBERS PAYING HALF DUES	1,852

[CLICK HERE FOR CUMULATIVE MEMBERSHIP DATA](#)